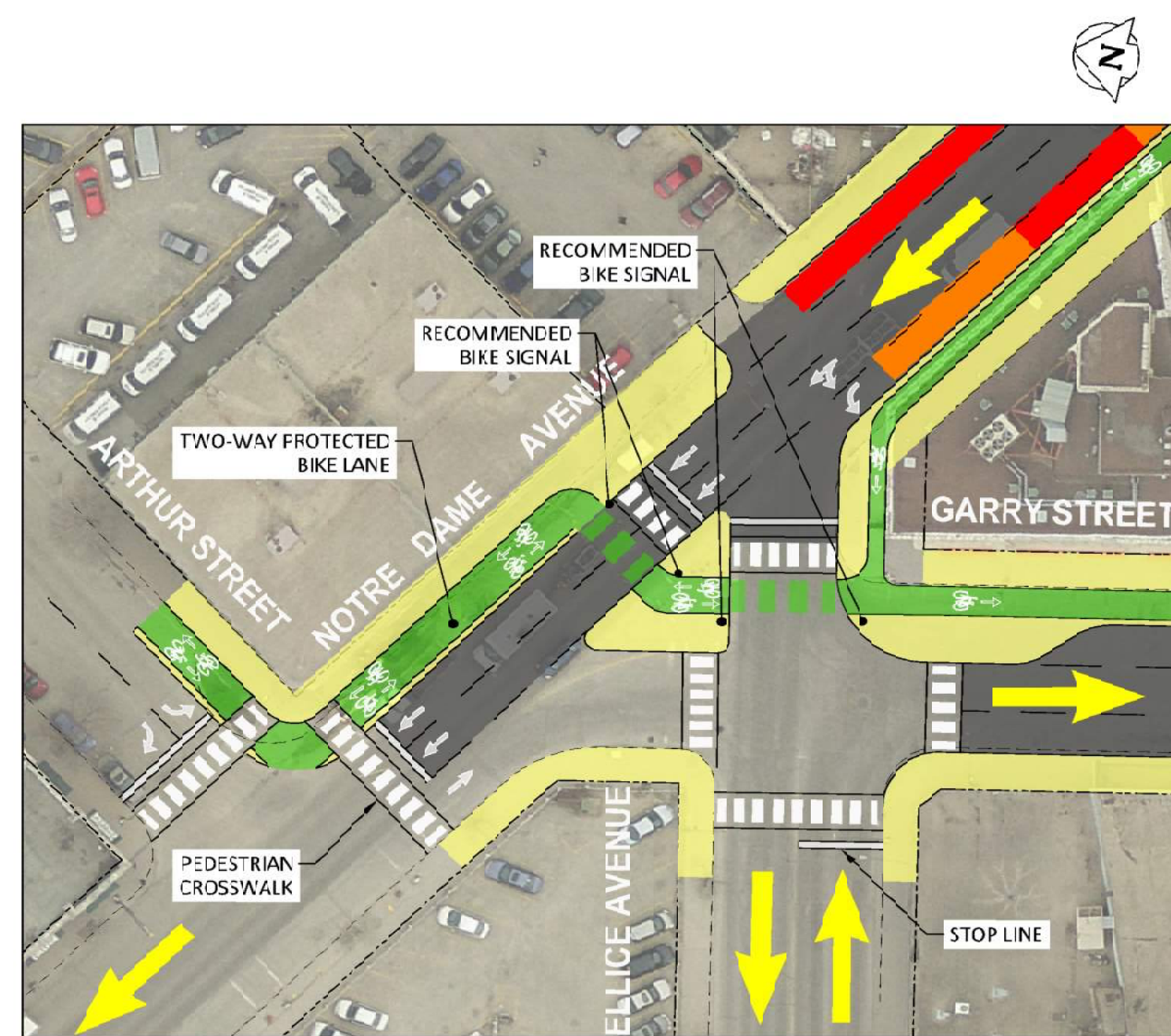
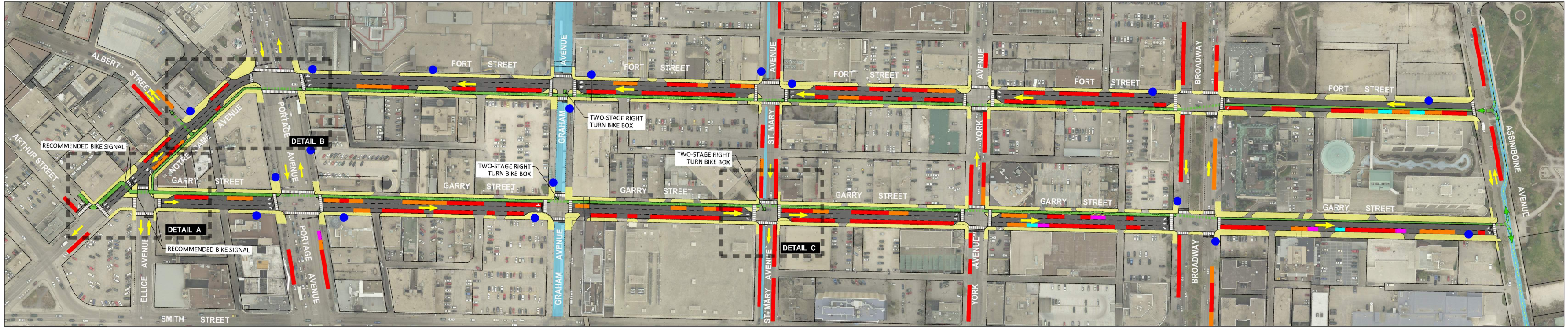
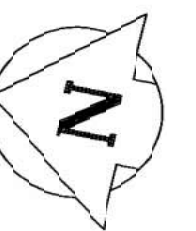
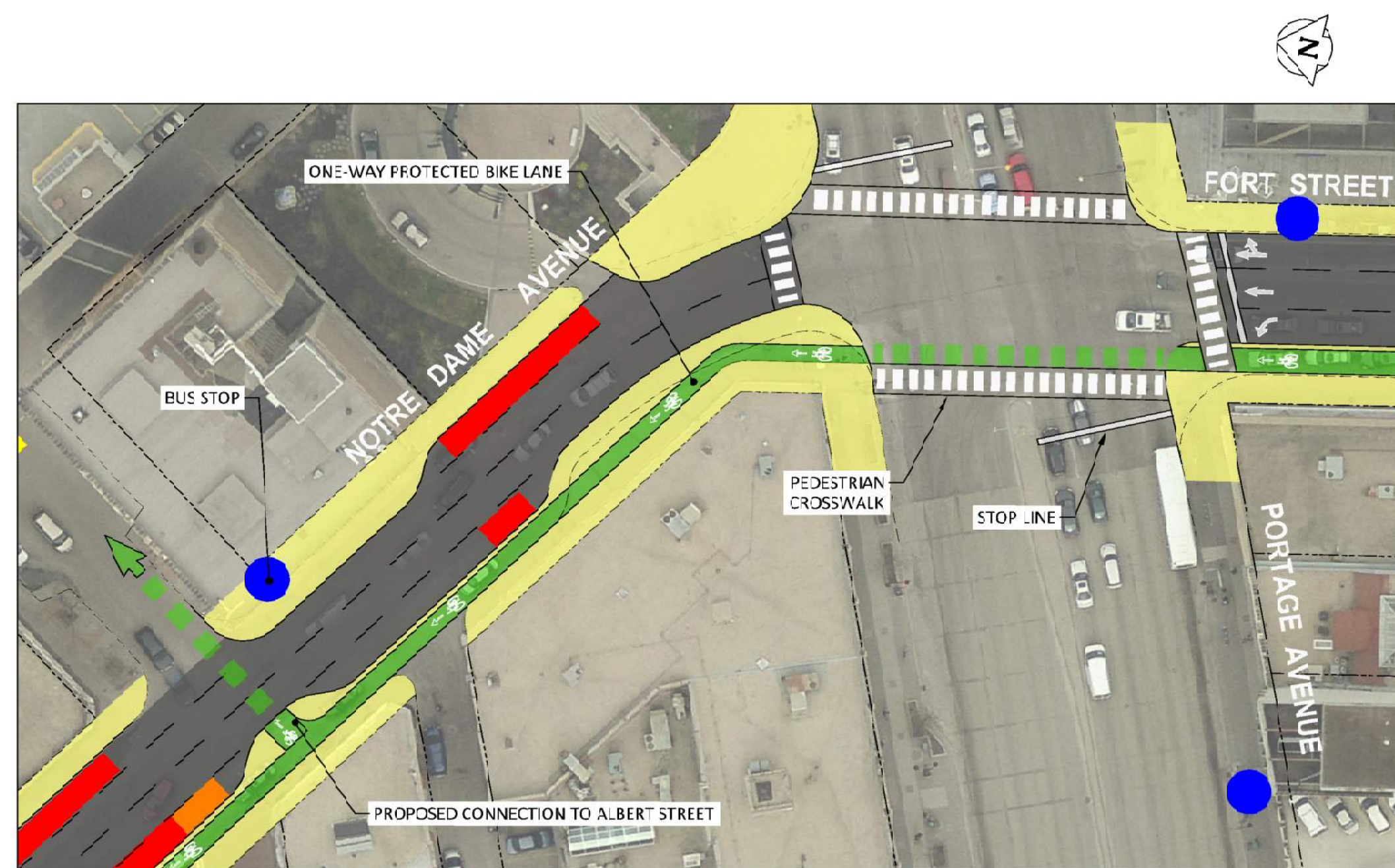


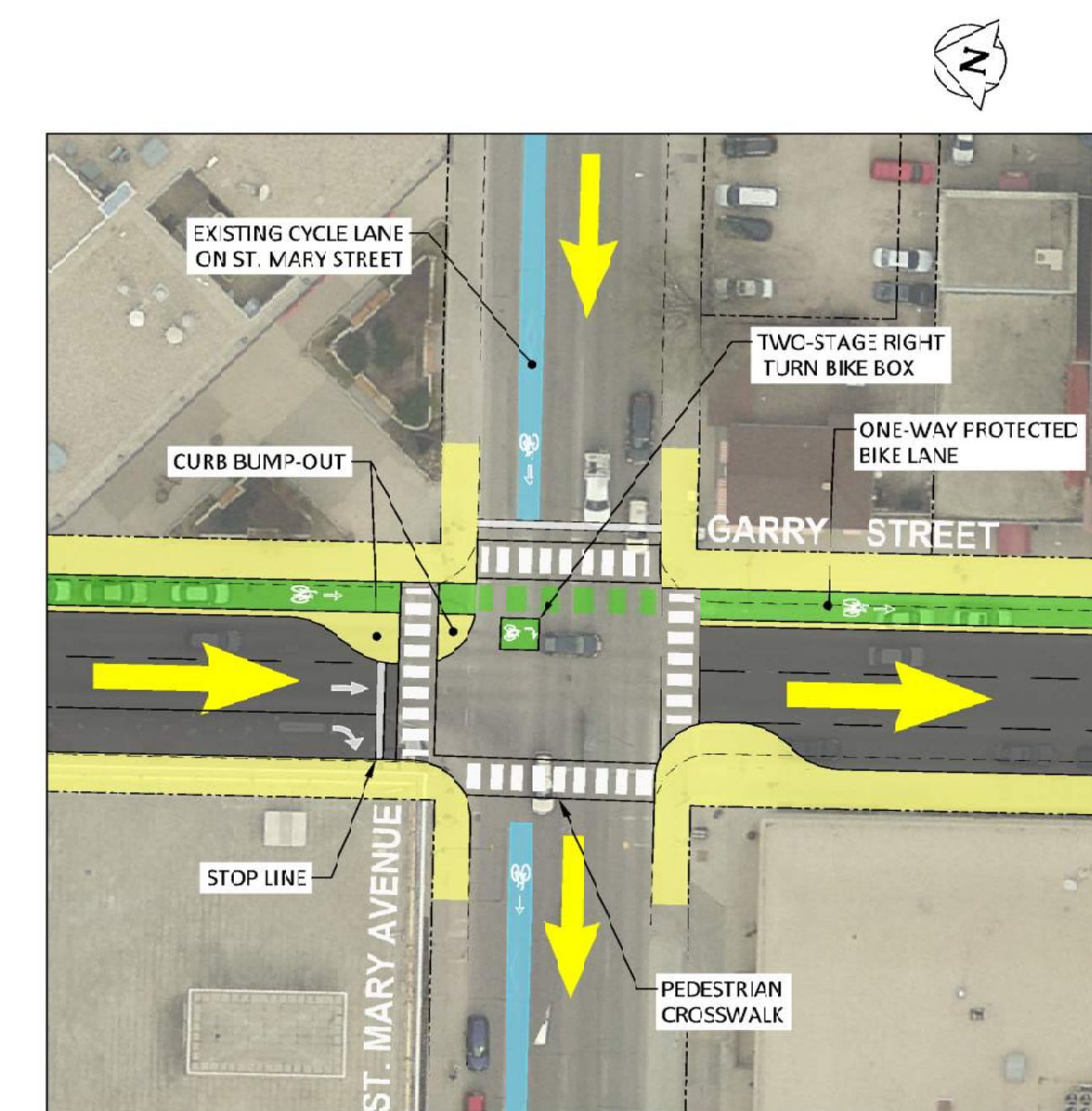
# OPTION 3 ONE-WAY WIDE LEFT SIDE PROTECTED BIKE LANES ON FORT & GARRY STREETS



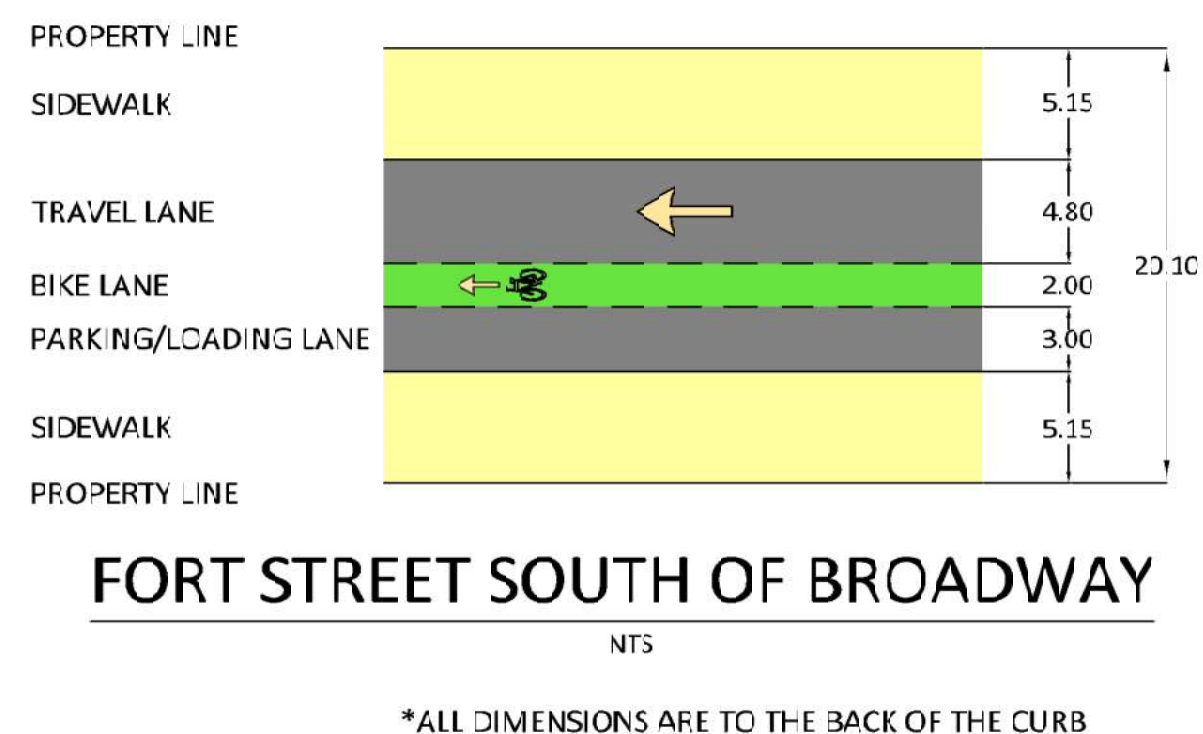
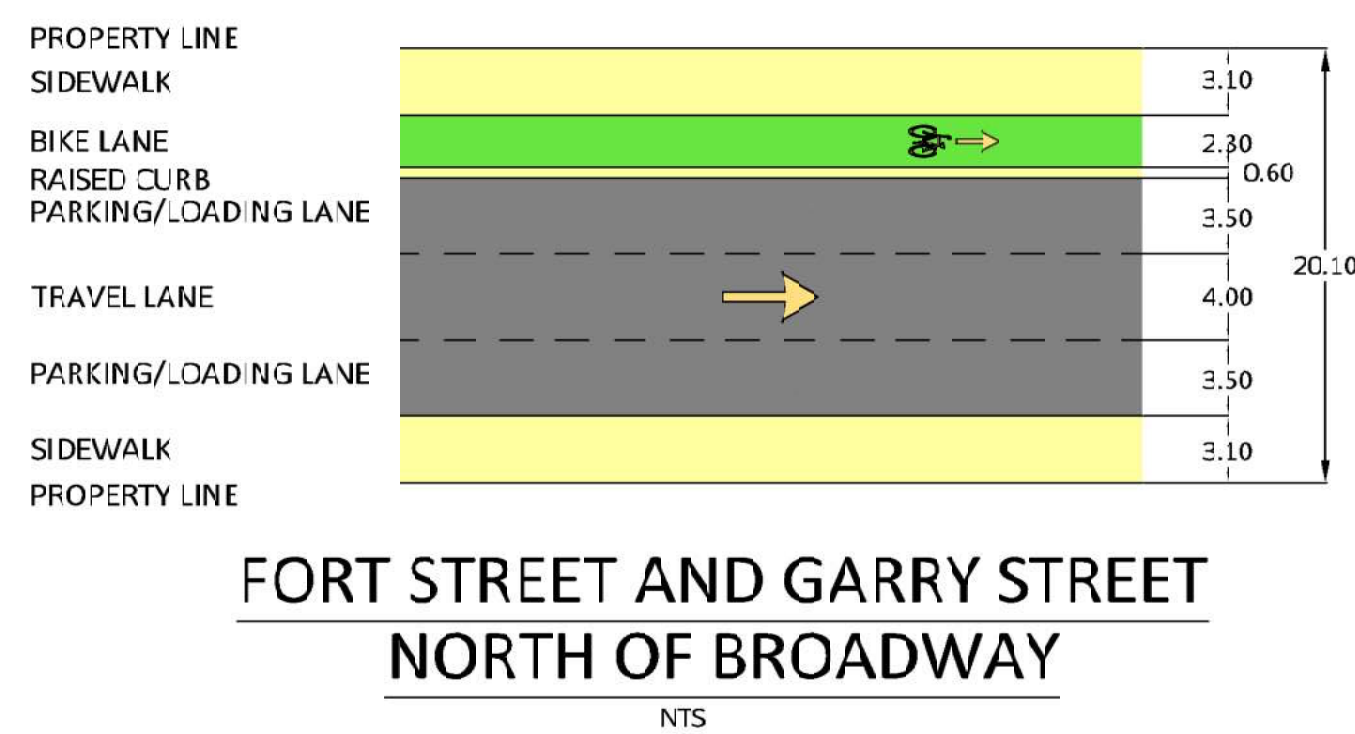
DETAIL A - ARTHUR STREET CONNECTION



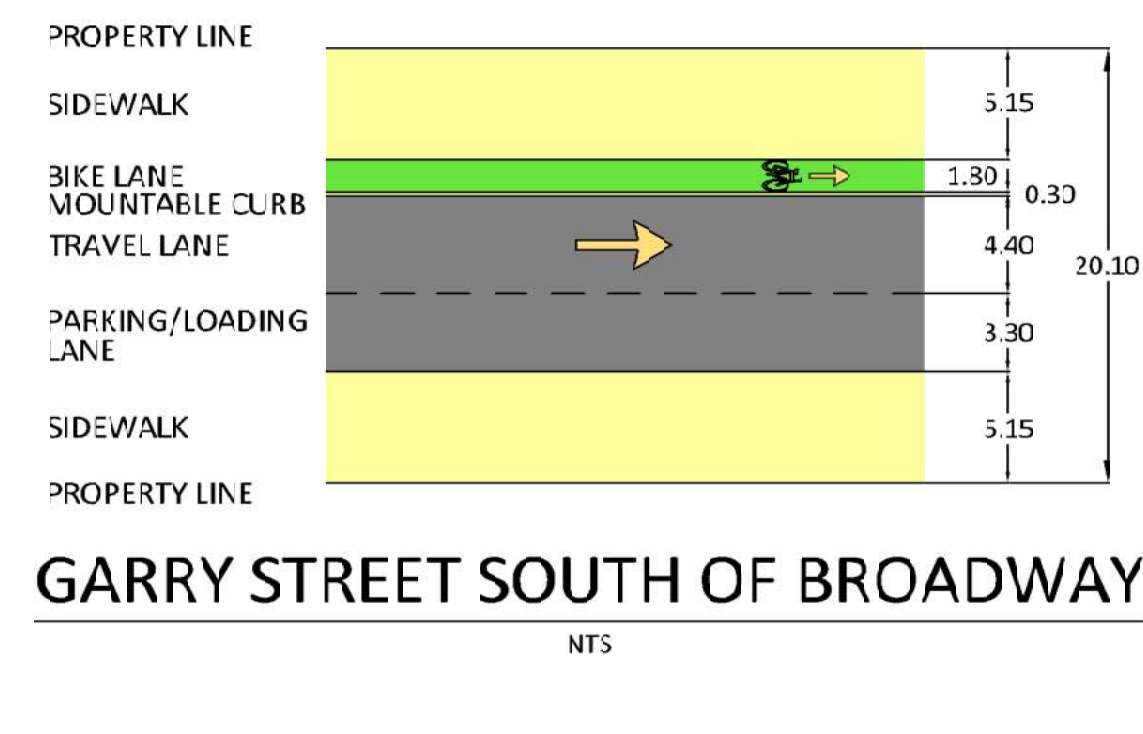
DETAIL B - FORT STREET AT PORTAGE AVENUE



DETAIL C - GARRY STREET AT ST. MARY AVENUE



\*ALL DIMENSIONS ARE TO THE BACK OF THE CURB (TYPICAL FOR ALL SECTIONS)



## LEGEND:

- PROPOSED SIDEWALK AND BOULEVARD
- PROPOSED BIKE LANE
- PROPOSED TRAVEL LANE
- PROPOSED PARKING
- PROPOSED ACCESSIBLE PARKING
- PROPOSED LOADING
- PROPOSED ACCESSIBLE LOADING
- PROPOSED CONNECTION
- EXISTING BIKE FACILITY
- EXISTING BUS STOP

